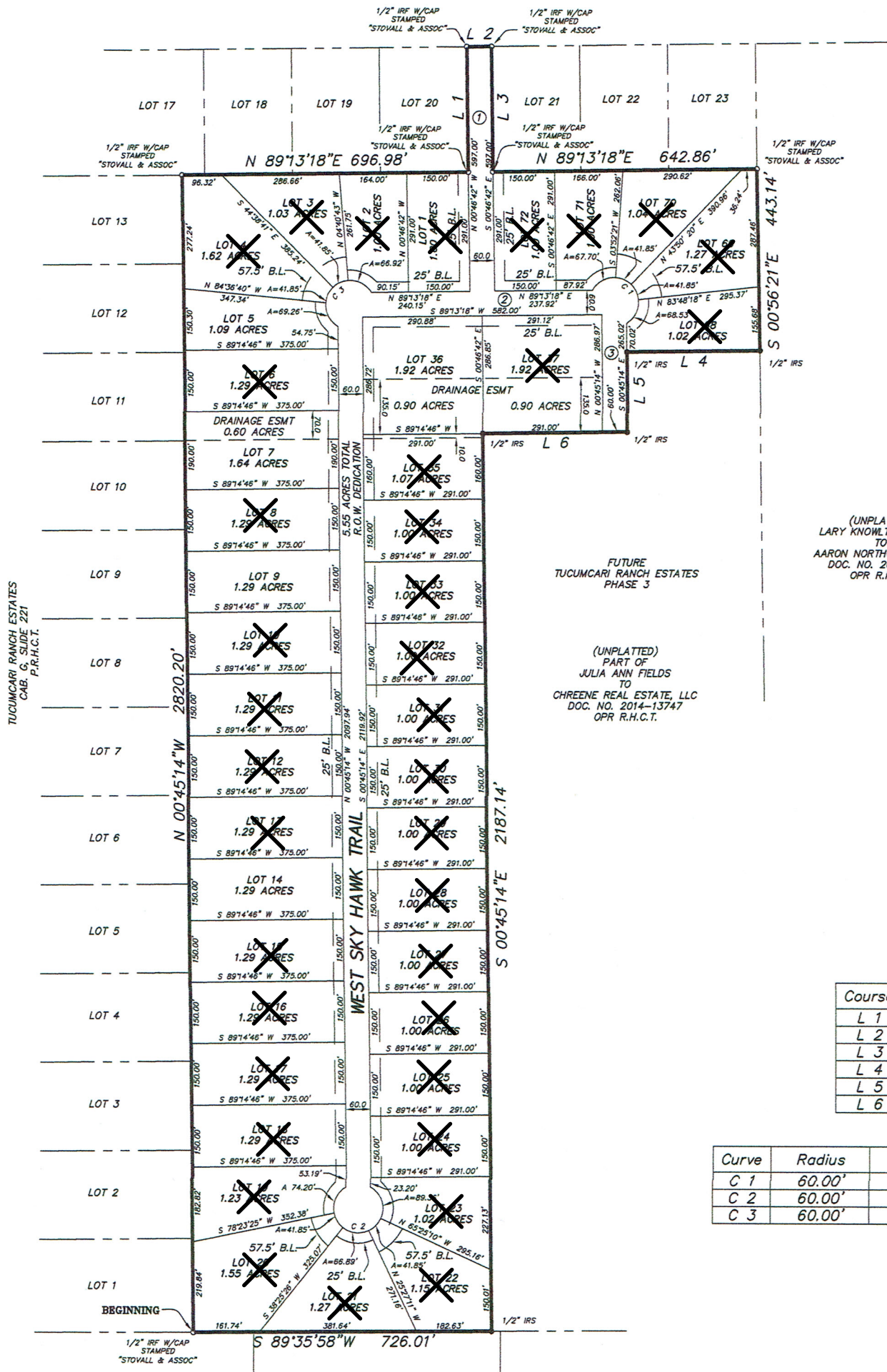
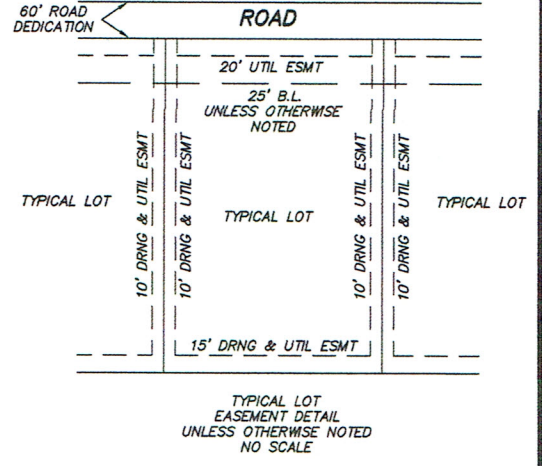


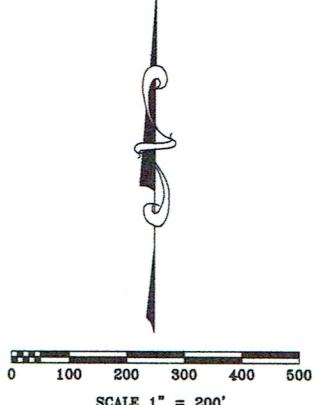
COUNTY ROAD NO. 2526  
(BILL BAILEY ROAD)



TUCUMCARI RANCH ESTATES  
CAB. G. SLIDE 221  
P.R.H.C.T.

(UNPLATTED)  
LARY KNOWLTON, ET UX  
TO  
AARON NORTHCUTT, ET AL  
DOC. NO. 2015-4471  
OPR R.H.C.T.

(UNPLATTED)  
PART OF  
JULIA ANN FIELDS  
TO  
CHREENE REAL ESTATE, LLC  
DOC. NO. 2014-13747  
OPR R.H.C.T.



STREET NAMES

①	SKY HAWK TRAIL
②	NORTH SKY HAWK TRAIL
③	EAST SKY HAWK TRAIL

Course	Bearing	Distance
L 1	N 00°46'42" W	306.00'
L 2	N 89°13'18" E	60.00'
L 3	S 00°46'42" E	306.00'
L 4	S 89°14'46" W	324.27'
L 5	S 00°45'14" E	195.00'
L 6	S 89°14'46" W	351.00'

Curve	Radius	Length	Delta	Chord	Chord Bear.
C 1	60.00'	219.94'	210°01'28"	115.90'	S 45°45'58" E
C 2	60.00'	314.16'	300°00'00"	60.00'	S 89°14'46" W
C 3	60.00'	219.89'	209°58'32"	115.92'	N 44°14'02" E

(UNPLATTED)  
TRACT ONE  
TONY C. DYER, ET AL  
TO  
ALAN JOHNSON, ET AL  
DOC. NO. 2010-395  
R.R.H.C.T.

(UNPLATTED)  
TRACT TWO  
TONY C. DYER, ET AL  
TO  
ALAN JOHNSON, ET AL  
DOC. NO. 2010-395  
R.R.H.C.T.

(UNPLATTED)  
LARY KNOWLTON, ET AL  
TO  
COREY DANIEL KNOWLTON  
VOL. 1151, PG. 626  
O.P.R.H.C.T.

FINAL PLAT  
TUCUMCARI RANCH ESTATES  
PHASE 2  
AN ADDITION TO HUNT COUNTY, TEXAS  
55.90 ACRES  
A.S. SUMMERLIN SURVEY, ABST. NO. 944  
JULY, 2017

OWNER: CHREENE REAL ESTATE, LLC  
P.O. BOX 873  
QUINLAN, TX. 75474

SHEET 1 OF 2

STOVALL & ASSOCIATES SURVEYORS  
FIRM LICENSE NO. 10079000

LEGEND	
● GAS	○ I.R.S.
○ GAS METER	— FENCE
— ELECTRIC METER	— BRICK WALL
— IRON ROD SET	— BOUNDARY LINE
— ELEC. SERVICE	— CONCRETE
— CROSS TIE WALL	— ROCK WALL
— ASPHALT	— ASPHALT

P.O. BOX 202 • GREENVILLE, TEXAS 75403 • PHONE (903) 450-1120 • FAX (903) 450-1119 • Info@stovallassociates.com

